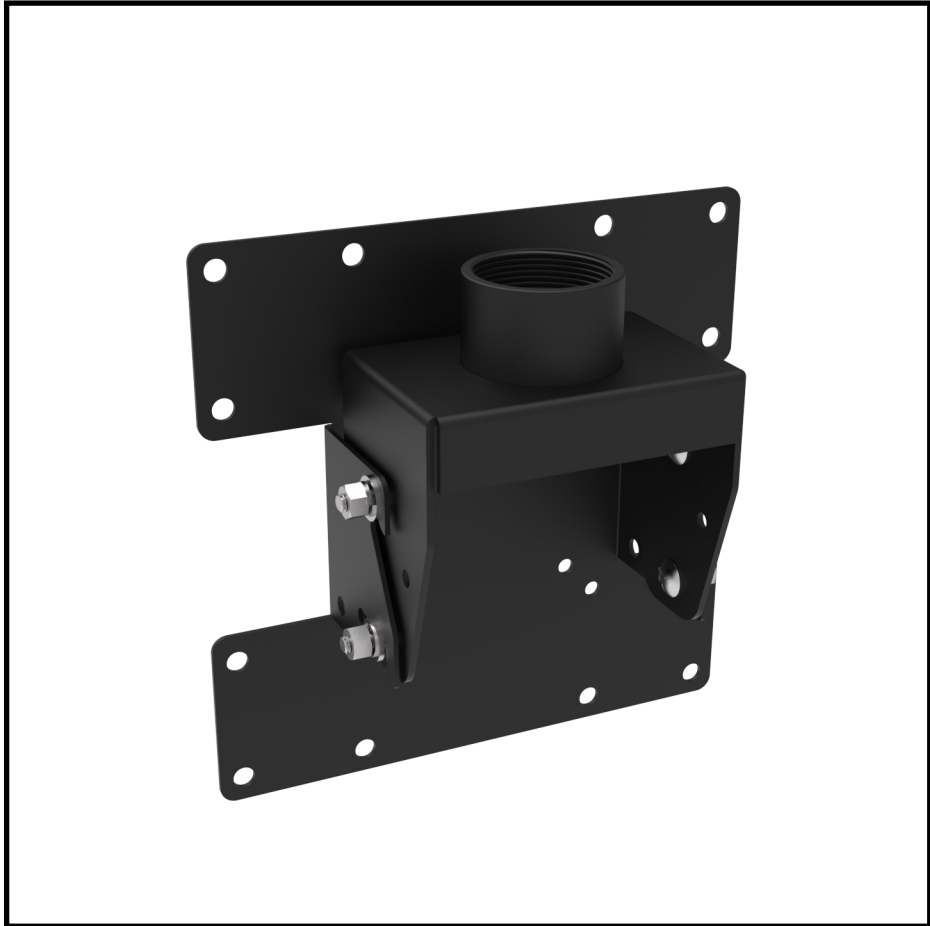


# INSTALLATION GUIDE

## PENDANT MONITOR MOUNT Model: MMB0603B



#### ABOUT THIS DOCUMENT

This document pertains to installation of the Pendant Monitor Mount (MMB0603B). Before installation, please familiarize yourself with this installation guide.

#### PRODUCT MODIFICATIONS

This product is to be installed and used for the specific purpose for which it was designed. It is not to be modified or serviced by anyone other than Wren. Unauthorized changes or modifications to the product will result in the warranty being voided and could possibly invalidate regulatory certifications.

#### WARRANTY

Unless otherwise noted, all products are covered by Wren's Standard Limited Manufacturer's Warranty as set forth in the current version of Wren's [Terms and Conditions](#).

#### INTELLECTUAL PROPERTY RIGHTS

Wren maintains certain intellectual property rights that may pertain to this product. To see a list of our patents, please refer to the current version of Wren's [Terms, Conditions and Policies](#).

#### TRADEMARK ACKNOWLEDGMENTS

Wren®, the Wren logo, Hyperion® and the Hyperion logo are trademarks of Wren. The trademarks that are followed by ® are registered trademarks in the U.S. All other trademarks and/or registered trademarks mentioned herein are properties of their respective owners and are for reference purposes only. The use of such third party trademarks does not indicate any affiliation with or sponsorship of or by Wren. All rights reserved.

## PRODUCT SUPPORT



[WWW.WRENSOLUTIONS.COM/SUPPORT](http://WWW.WRENSOLUTIONS.COM/SUPPORT)



(800) 881-2249

EXTENSION 4

## COMPONENT LIST

Prior to installation, verify that all hardware is included. If there are missing components, please contact Wren.

- A. VESA Plate
- B. Pole Adapter
- C. Hardware Pack - Monitor Mounting Screws

### Wren GVM32-0-3011-B 32" Monitor

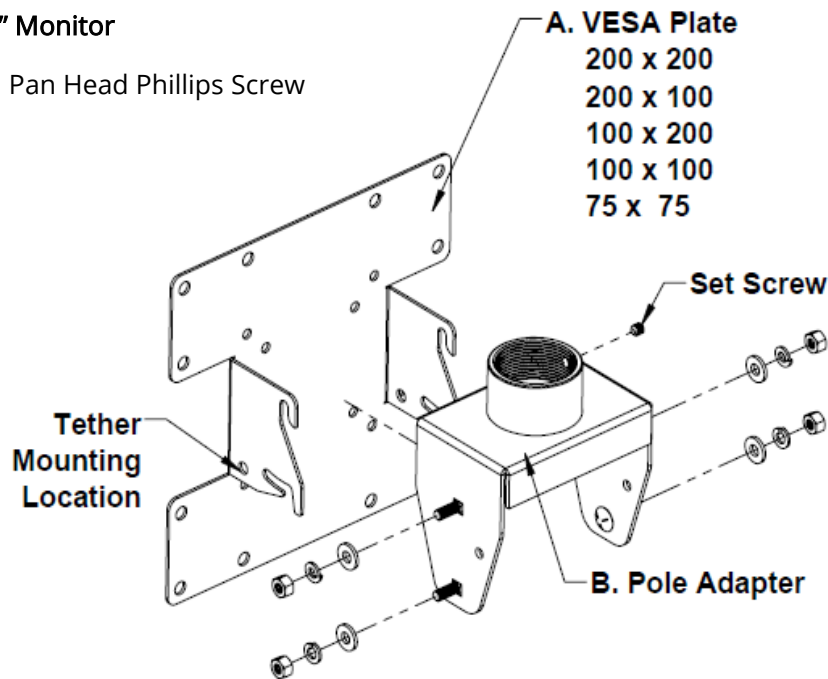
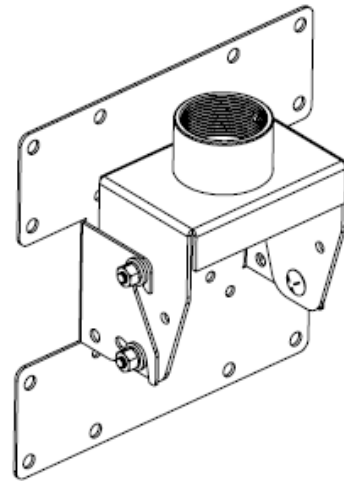
- (4) M6 x 1mm, 10mm lg. Pan Head Phillips Screw
- (4) M6 Flat Washer

### Wren GVM43-0-3016-B 43" Monitor

- (4) M5 x 0.8mm, 8mm lg. Pan Head Phillips Screw
- (4) M5 Flat Washer

### Wren GVM43-0-3017-B 43" Monitor

- (4) M6 x 1mm, 10mm lg. Pan Head Phillips Screw
- (4) M6 Flat Washer



## INSTALLATION STEPS

1. Install VESA Plate to back of monitor.
2. Thread Pole Adapter to CM-XL-xx Pole or 1.5" threaded pipe.
3. Tighten set screw on pole adapter.
4. Hook VESA plate with monitor to studs on Pole Adapter.
5. Loosely install washers and nuts.
6. Adjust desired monitor tilt.
7. Tighten nuts.



Attach Safety Tether  
(included with CM-XL-xx Pole)