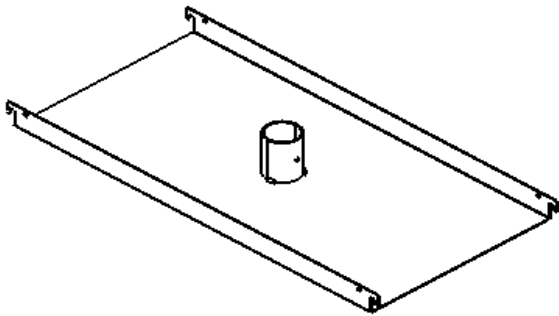


DCSP-CMSBB10

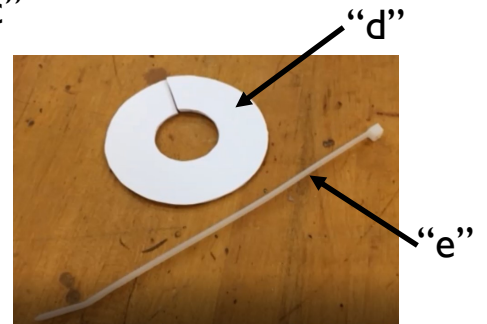
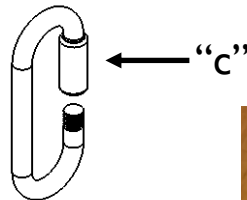
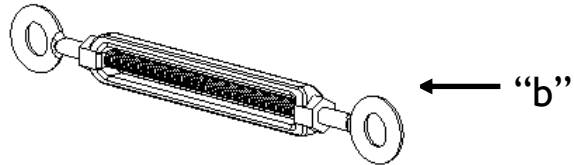
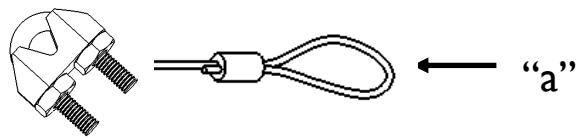
REQUIRED TOOLS

- Phillips Screwdriver #2
- Hole Saw 1.5" dia. or Utility Knife
- Wrench 9/32"

COMPONENT LIST



“A” - Ceiling Support Plate

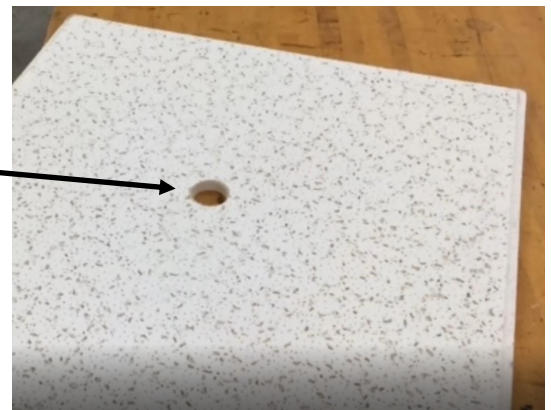


Hardware Kit #1

- a. Tether, 10' lg. with wire rope clamp (x4)
- b. Turnbuckle (x4)
- c. Threaded Connecting Link (x4)
- d. Escutcheon (x1)
- e. Zip tie, White (x1)

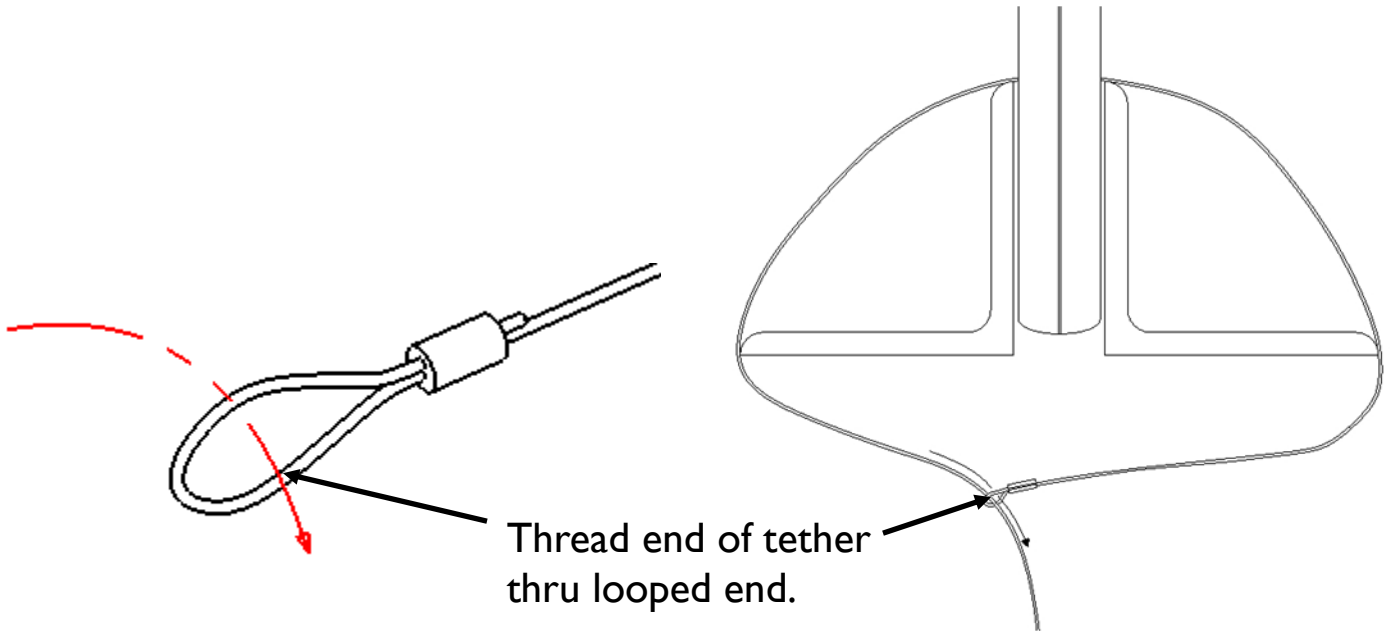
I Drill Hole in Ceiling tile.

Drill 1.5" DIA. hole in the center of the ceiling tile.



2

Loop each Tether over red iron and pass through looped end of Tether.



3

Attach each Tether to Turnbuckle using wire rope clips.

