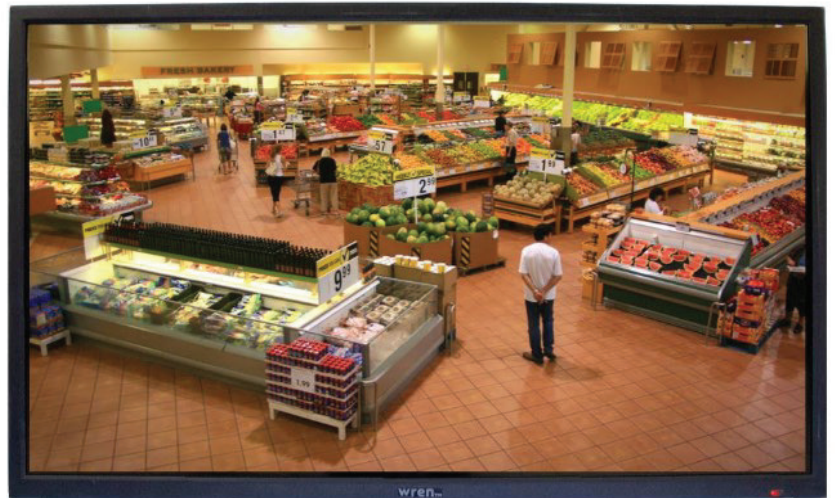


MONITOR SERIES

EXTRA LARGE

FEATURES

- HD and 4K Resolution Provides Sharp Detail
- Commercial Grade for 24/7 Use
- Auto-on Feature Eliminates Re-setting Monitor After Power Failures
- 24VDC Input for Flexibility in Wiring
- UL Listed
- 24VDC Power Supply Included



MODEL NUMBER	GVM32-0-3011-B	GVM43-0-3016-B	GVM55-0-3016-B
Panel	32" LED Backlight	43" LED Backlight	55" LED Backlight
Resolution	1920 x 1080	4K 3840 x 2160	4K 3840 x 2160
Brightness		300 NIT	
Contrast Ratio	3000:1	1000:1	1200:1
Response Time	18 ms	8 ms	8 ms
Power Consumption	60 W	72 W	240 W

ACCESSORIES

- MMB0302** Articulating Wall Mount, VESA 75x200, Black
- MMB0601** Ceiling Mount, Back-to-Back, 1.5" NPT, VESA 400x400 Black (w/ CM-XL-x Pole)
- MMB0602** Ceiling Mount, Single, 1.5" NPT, VESA 400x400, Black (w/ CM-XL-x Pole)
- MMB0603B** Ceiling Mount, Single, 1.5" NPT, VESA 75-200, Black (w/ CM-XL-x Pole)
- MMB0604B** Ceiling Mount, Back-to-Back, 1.5" NPT, VESA 75-200, Black (w/ CM-XL-x Pole)
- CM-XL-5-W** Telescoping Pole, 2-5.5' length, White (w/ MMB060x Ceiling Mount)
- CM-XL-11-W** Telescoping Pole, 6-11' length, White (w/MMB060x Ceiling Mount)
- CM-XL2-21-W** Telescoping Pole, 8-21' length, White (w/ MMB060x Ceiling Mount)
- DCSP-CMXL** Drop Ceiling Support Plate, use with a CM-XL-x Pole, White
- CS-7** Unistrut, 7', Open Ceiling Framing Channel, White

MODEL NUMBER	Various*
Aspect Ratio	16:9
Viewing Angle - W x H	178° x 178°
Input Voltage	24VDC
External Control	Tamper Resistance Lock
HDMI	2 Inputs
USB	1 Input
Certifications	UL, CE, FCC, Class B, RoHS

***MODELS INCLUDED IN CHART -
GVM32-0-3011-B, GVM43-0-3016-B, GVM55-0-3016-B**