

HMI222 Pole Mount Adapter (for EG12)



The Power to See
Your Business™

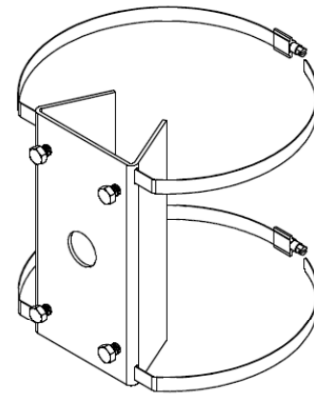
OVERVIEW

The **HMI222 Pole Mount Adapter** is designed to mount the **EG12** camera housing to a pole with the diameter of 3"-10".

WARNINGS AND SAFEGUARDS

Prior to installation and use of this product, please observe the following warnings

1. Installation and servicing should be done by qualified personnel, and all work done should conform to local codes.
2. Using replacement parts or accessories other than Wren may invalidate the warranty.



COMPONENTS [FIG. 1]

- A. Pole Mounting Bracket (1)
- B. Band Clamp (2)
- C. Bolts (4)

INSTALLATION

1. Carefully unpack box, inspect content for damage and verify that all components are included.
2. Feed Band Clamps through slots in the Pole Mounting Bracket and wrap around Pole.
3. Adjust Pole Mounting Bracket to desired height and securely tighten Band Clamps with screwdriver.
4. Place Rubber Gasket (*SOLD WITH EG12*) up to Pole Mounting Bracket.
5. Thread two stainless steel bolts through Rubber Gasket and into the top holes of the Pole Mounting Bracket. Allow space between the underside of bolt heads and Rubber Gasket for the EG12 Mounting Plate.
6. Install two lower bolts, make sure the EG12 housing is level, and tighten all four bolts securely.
7. Provide a drip loop with the liquid tight flex conduit if the cable entry is from above the housing.
8. Refer to the EG12 housing instructions sheet to complete the installation.

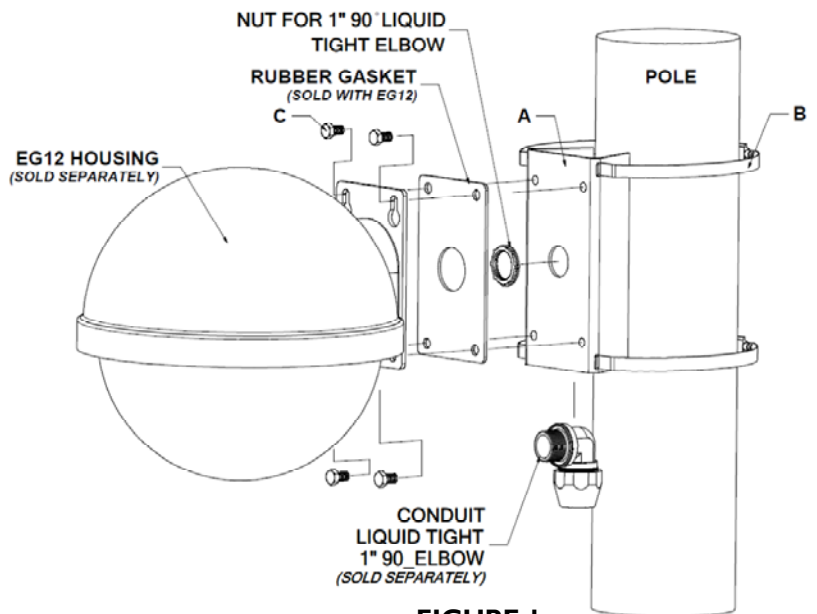
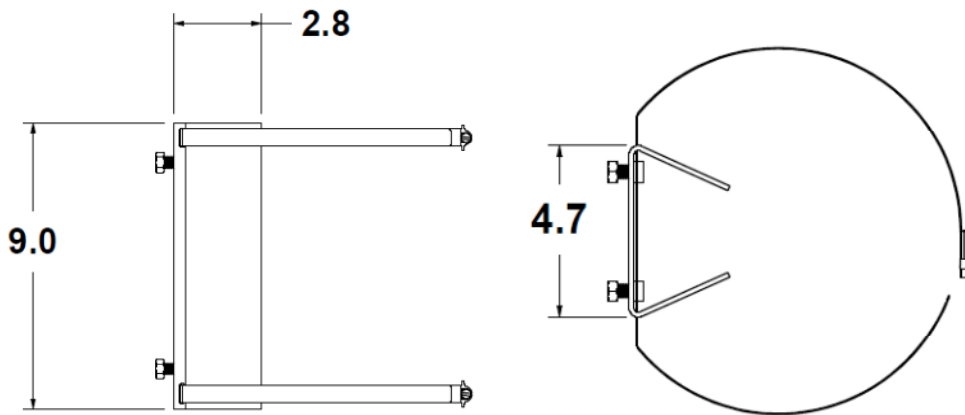


FIGURE 1

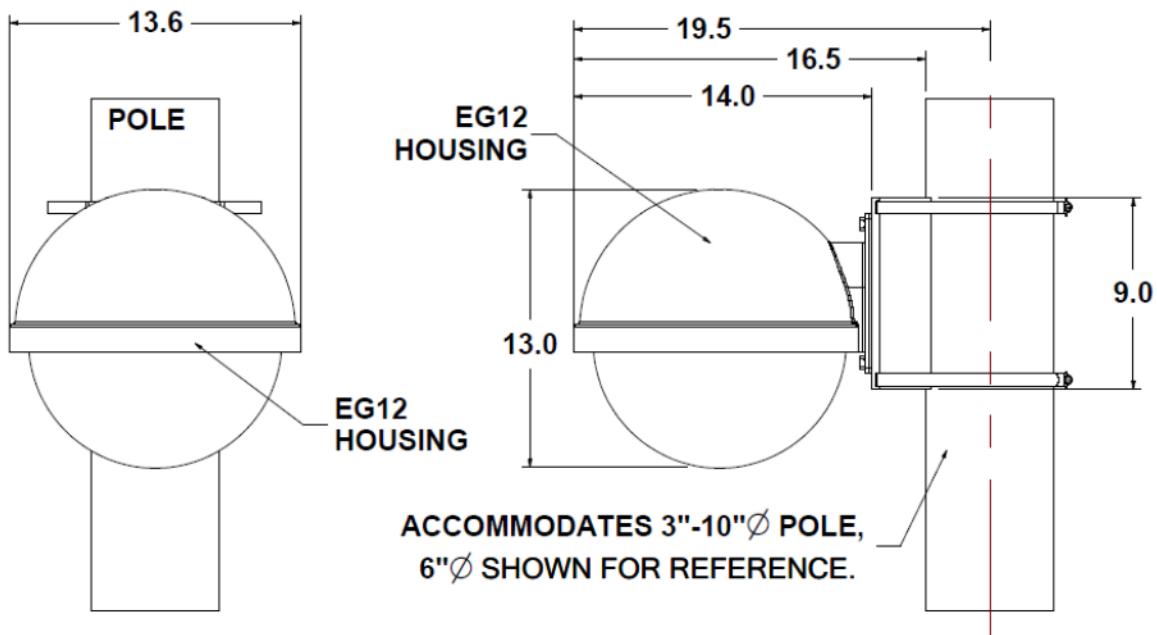
MECHANICAL PROPERTIES

MATERIAL: Aluminum, .125" Thick 5052-H32

FINISH: Powder Coated Pro-Cement Gray



DIMENSIONAL VIEWS WITH EG12



WREN LIMITED MANUFACTURER'S WARRANTY

Unless otherwise noted, all products are covered by Wren's Standard Limited Manufacturer's Warranty as set forth in the current version of Wren's Terms and Conditions. For a copy of the Terms and Conditions please use the contact information below.

RETURNS

In order to return parts to the factory for repair or credit, please call the factory at (800) 881-2249 or (573) 893-2249 to obtain a Return Authorization (RA) number. All returns are subject to Wren's RA Policy. Goods returned for credit should be in their original condition—new and unused. Merchandise may be returned by the Customer for credit within 30 calendar days from the invoice date. Products may not be returned more than 31 calendar days from the invoice date. Custom, special order and OEM products may not be returned.

Wren®, the Wren logo, The Power to See Your Business, Wren IP Solutions, No Tools Required and Solution Set Series are trademarks of Wren. The trademarks that are followed by ® are registered trademarks in the U.S. All other trademarks and/or registered trademarks mentioned herein are properties of their respective owners and are used for reference purposes only. The use of these trademarks does not indicate any affiliation with or sponsorship of or by Wren. ©2006 Wren. All rights reserved.