

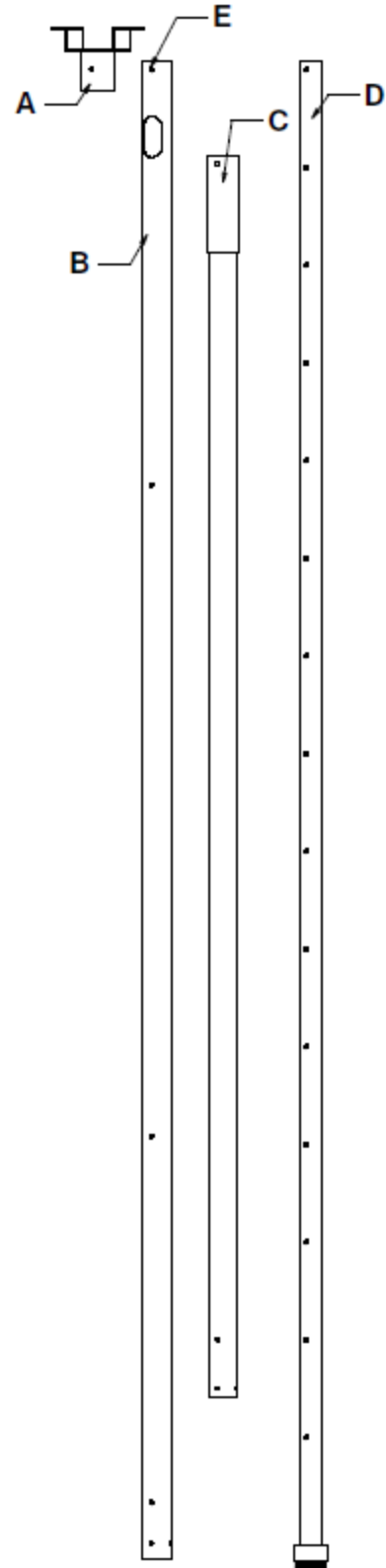
CM-XL2-21-W

STEP 1 - Remove Items from boxes and inspect.

NOTE: For low ceilings see required field modifications on page 6.

Supplied Parts

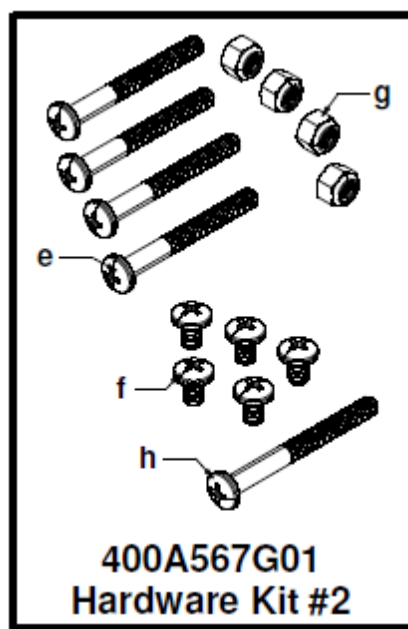
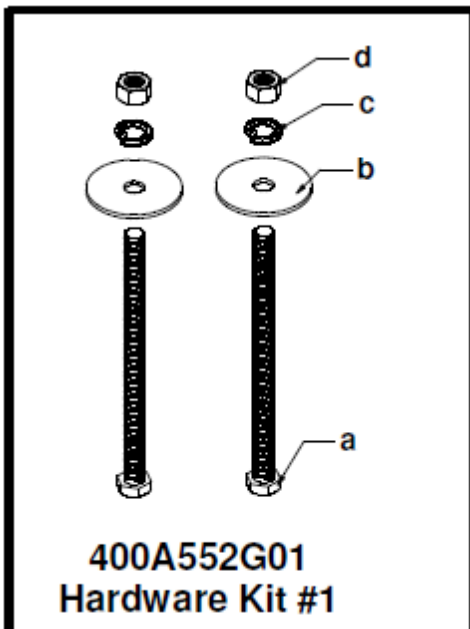
- A. Top Mount Assembly
- B. Top Tube 1.75" dia x 92" lg.
- C. Extension Assembly
- D. Bottom Telescoping assembly
- E. Not used
- F. Not used
- G. Not used
- H. Tether (not shown)
- I. Hardware Kit #1
 - a. Bolt, Hex Head, 3/8-16 x5.5" (2)
 - b. Washer (2)
 - c. Washer, Split lock 3/8 (2)
 - d. Hex nut, 3/8-16 (2)
- J. Hardware Kit #2
 - e. Screw, 1/4-20 x 2.25" Pan Hd. Phil (4)
 - f. Screw, 1/4-28 x .375" Pan Hd. Phil (5)
 - g. Nut, Nylock, 1/4-20 (5)
 - h. Screw, 1/4-20 x 2.5" Pan Hd. Phil (1)
- K. Installation Instructions



Tether
320A077P03
(not shown)

Required Tools

1. Wrench/ Socket size 9/16"
2. Wrench/ Socket size 7/16"
3. Screw driver #2

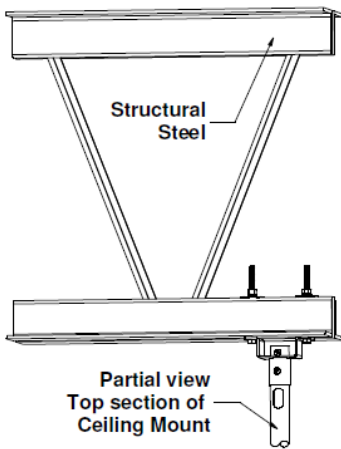


INSTALLATION INSTRUCTIONS

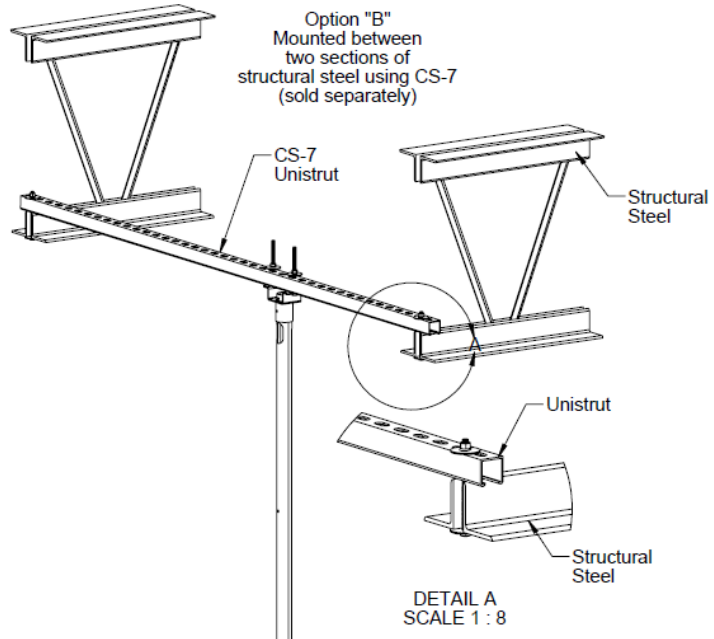
STEP 2 - Route power cables to desired location.

STEP 3 - Choose Mounting option A or B

Option "A"
Mounted directly
to structural steel



Option "B"
Mounted between
two sections of
structural steel using CS-7
(sold separately)



STEP 4 - Install Top Assembly with Top tube

- Choose mounting Option "A" or "B".
- Slide part "A" over part "B" to expose thru hole at end of tube "B". See Fig. 1.
- Insert screw "e" thru tube "B" and thread nut "g" on screw.
- Tighten screw "f" to lock rotation of tube in place.
- Mount Top Assembly with Top tube per chosen option using **Hardware Kit #1**.
- Route Tether and cables through Cable Entry in Top Tube.

NOTE: A minimum of 8 foot of power cable should extend beyond the bottom end of Top Tube.

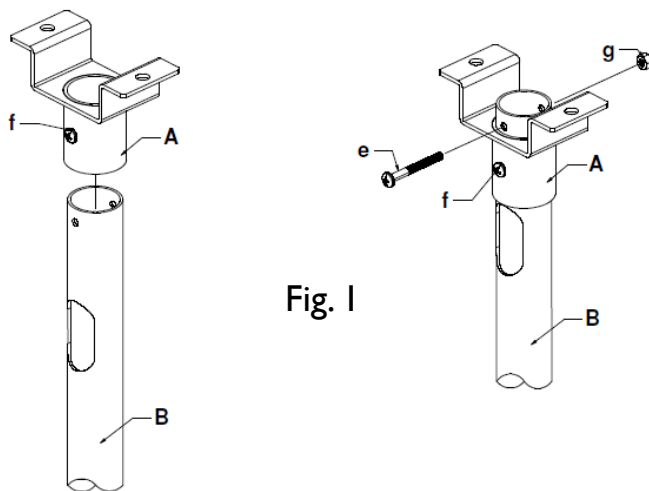
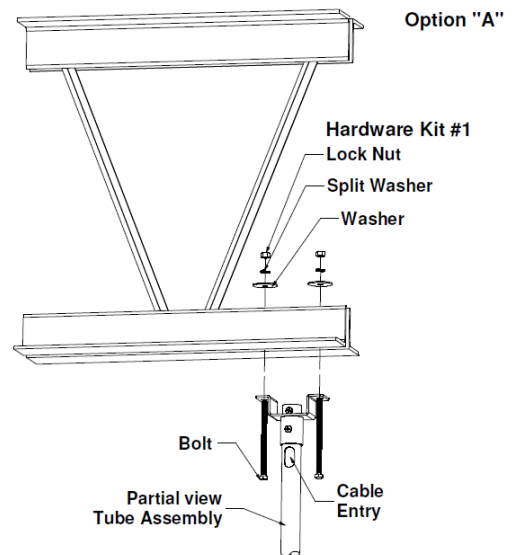
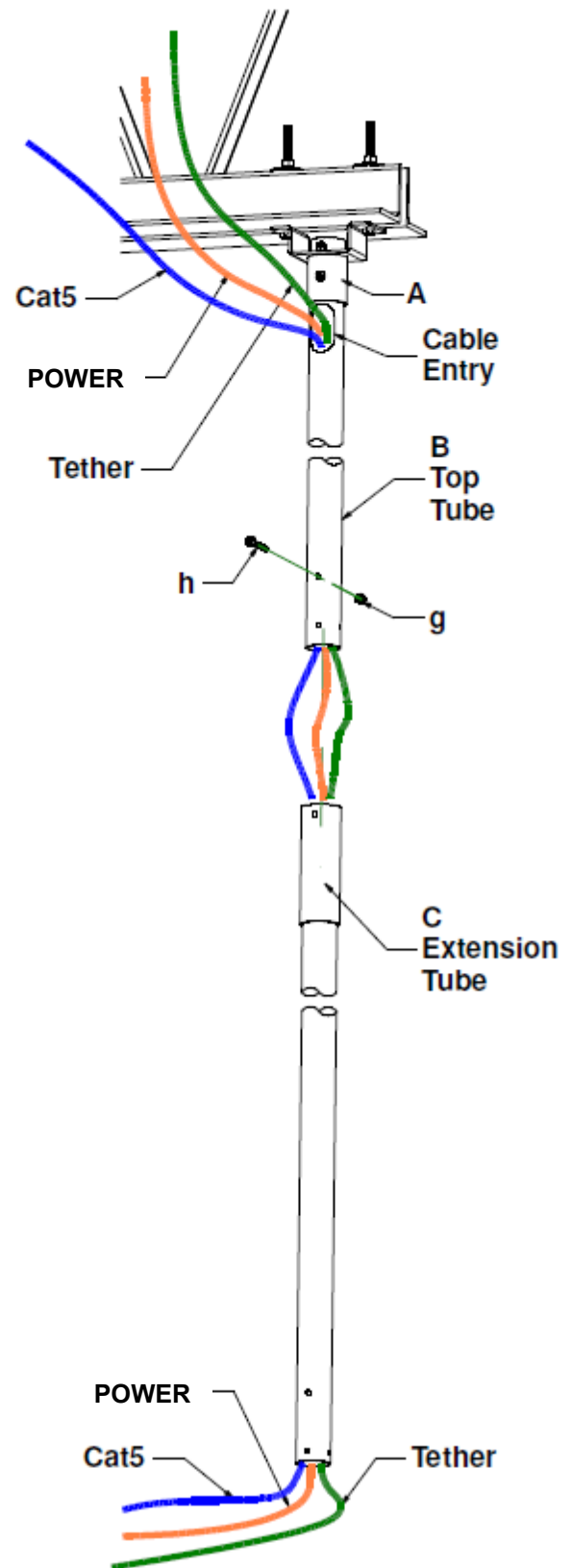


Fig. 1

INSTALLATION INSTRUCTIONS

STEP 5 – Install Extension Tube

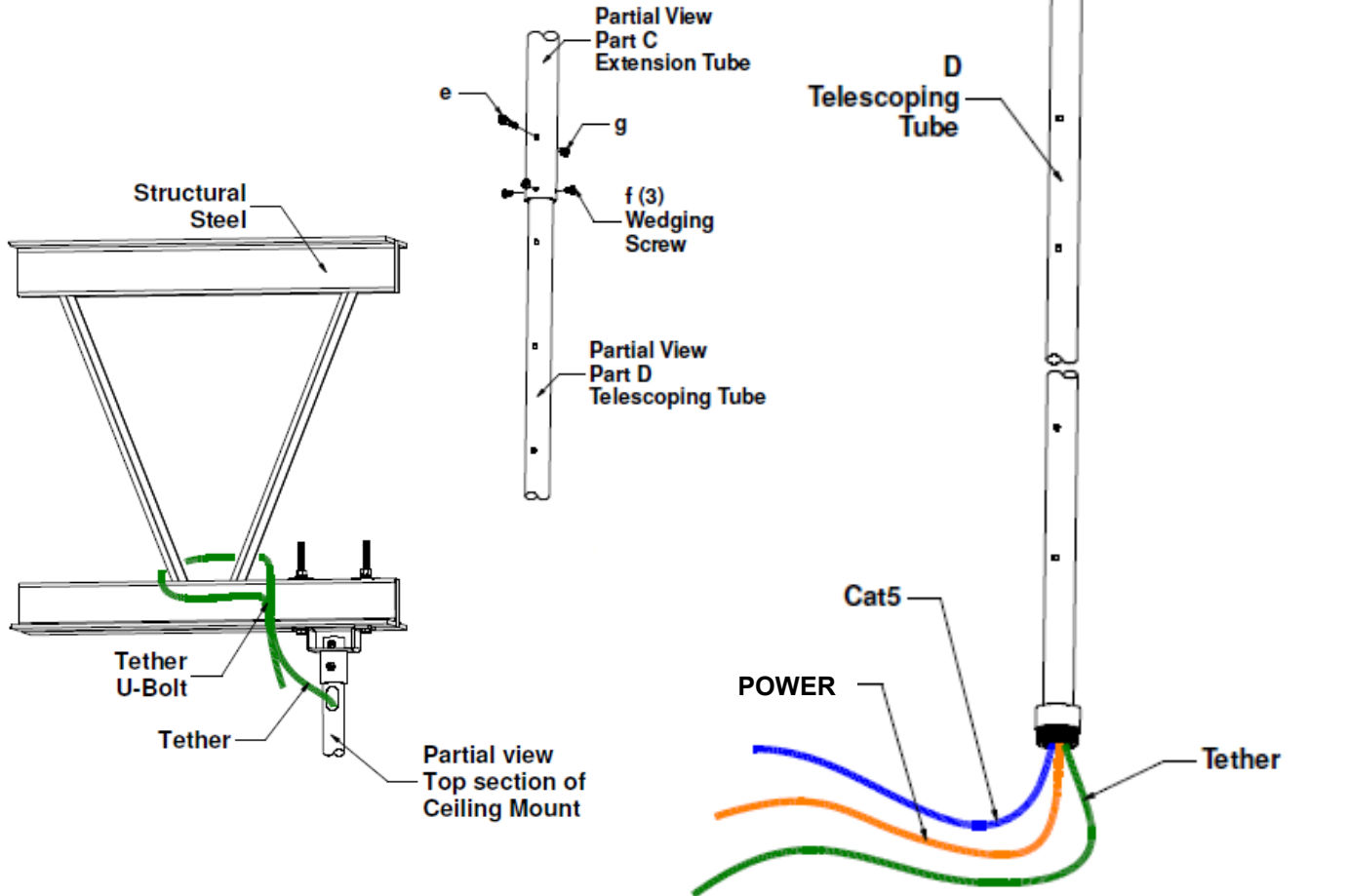
- A. Route extended Tether and cables through Extension Tube “C” starting with the larger diameter end.
- B. Complete connection by inserting Screw “h” through Extension Tube and Top tube. Thread Lock nut “g” on Screw “h”.
- C. Pull cables to extend beyond the end of the Extension Tube. Make sure there is enough cable to thread through the Telescoping Tube.



INSTALLATION INSTRUCTIONS

STEP 6 – Install Bottom Adjustment Tube and set height adjustment

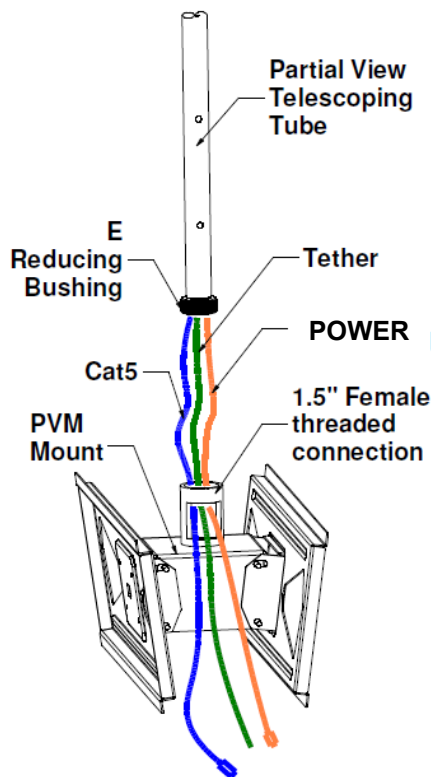
- A. Route extended portion of Tether and cables through “D” (Telescoping Adjustment Tube).
- B. Slide Telescoping Tube into Extension Tube “C” until bolt holes align at desired height.
- C. In Hardware Kit #2 find one Screw, 1/4-20 x 2.25” Pan Head part “e”. Use part “e” to lock the desired height. Slide screw through aligned adjustment holes of Telescoping Tube and install locknut part “g”.
- D. Extend Tether and cables as needed to have 18 inches of cable extending beyond telescoping tube.
- E. Tighten 3 wedging screws to prevent wobble and position Telescoping tube vertical.
- F. Secure Tether at the top of tube mount. Wrap Tether around the Structural Steel . Using the cable clip included in Tether package, complete connection. See figure below.



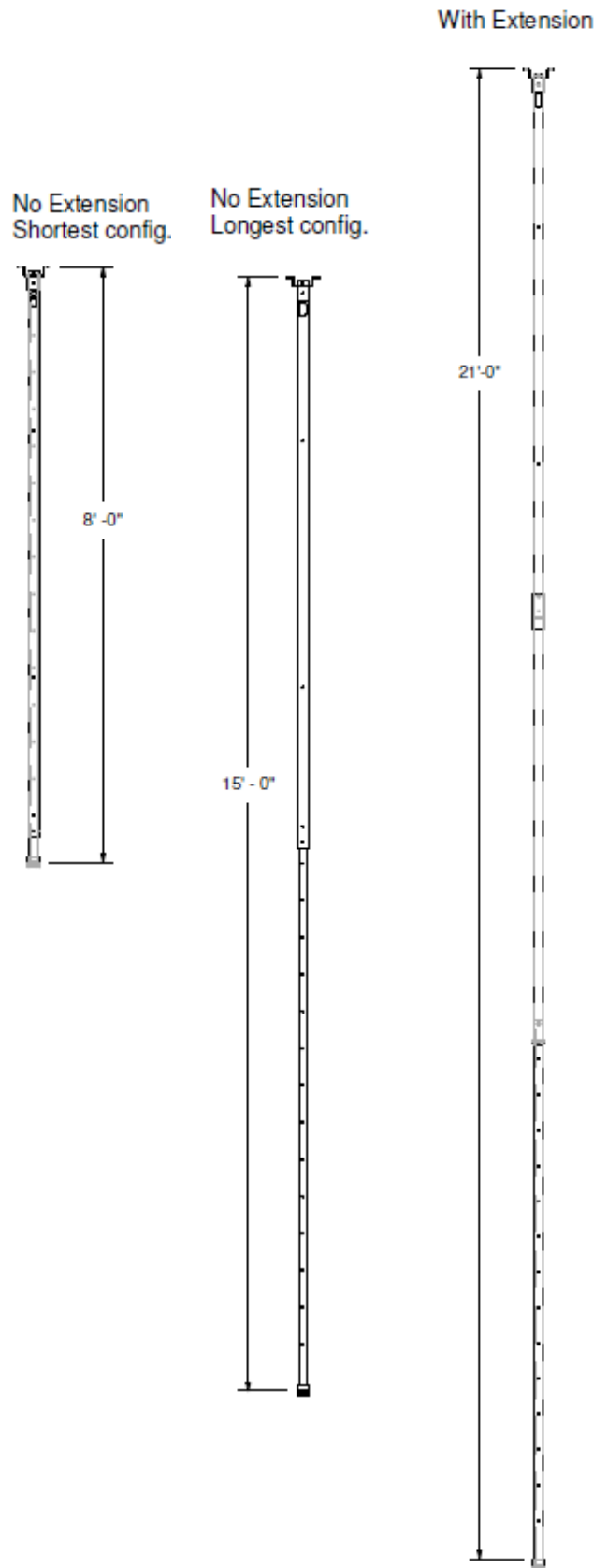
INSTALLATION INSTRUCTIONS

STEP 7 – Install desired Monitor Mount assembly

- A. Route extended Tether and cables through monitor mount as shown.
- B. Thread mount onto Telescoping Tube.
- C. Secure Tether to monitor mount by wrapping around mount and installing cable clip provided with Tether. **Remove all slack in tether!** In this case, the eye on the end of the Tether will not be used.



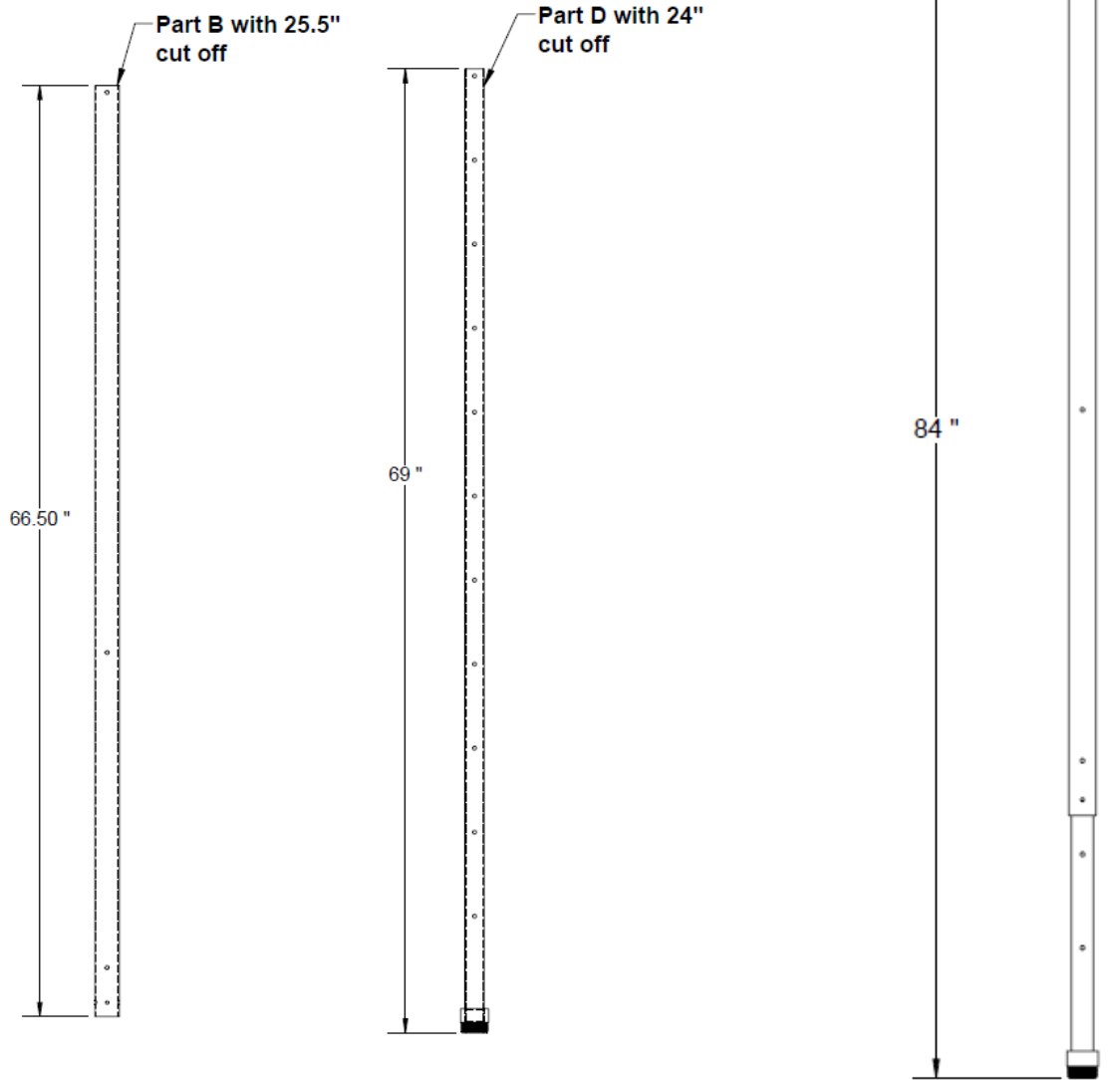
NOTE: Extension Tube “C” is not needed for length between 8’ and 15’.



INSTALLATION INSTRUCTIONS

7' Minimum pole length required field modifications

1. Find part "B" and cut 25.5" off the top end. The top end is identified by one 1/4" dia. thru hole with an oval shaped cable entry hole. The cabling will rout through the top of the tube.
2. Find part "D" and cut 24" off the end without the threaded adapter.



Unless otherwise noted, all products are covered by Wren's Standard Limited Manufacturer's Warranty as set forth in the current version of Wren's Terms and Conditions.

For a copy of the Terms and Conditions please visit our website at www.wrensolutions.com.



124 Wren Parkway - Jefferson City, MO 65109 - (800) 881-2249 - www.wrensolutions.com

Wren®, the Wren logo, and The Power to See Your Business are trademarks of Wren. The trademarks that are followed by ® are registered trademarks in the U.S. All other trademarks and/or registered trademarks mentioned herein are properties of their respective owners and are for reference purposes only. The use of such third party trademarks does not indicate any affiliation with or sponsorship of or by Wren. Copyright © 2015 Wren. All rights reserved.