

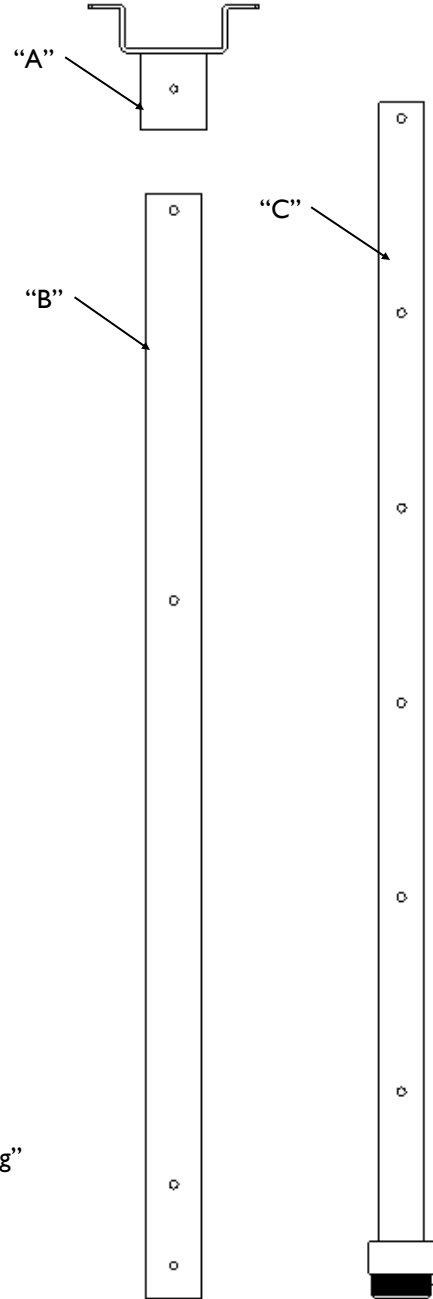
CM-XL-5-W Ceiling Mount, 3' to 5.5' adjustment.

CM-XL-11-W Ceiling Mount, 6' to 11' adjustment.

STEP 1 - Remove Items from boxes and inspect.

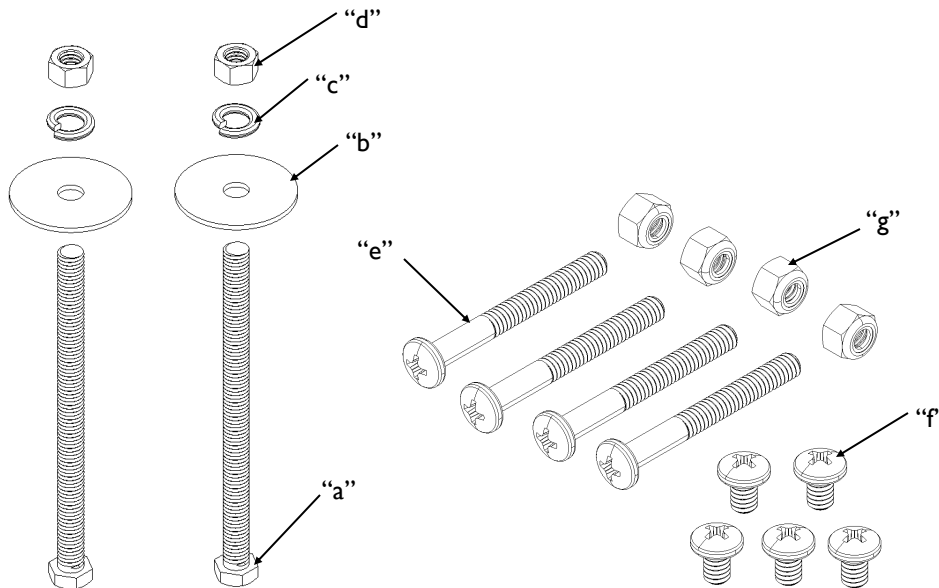
Supplied Parts

- A. Top Mount Assembly
- B. Top Tube 1.75" diameter
- C. Bottom Telescoping 1.375" diameter
- D. Tether (not shown)
- E. Hardware Kit #1
 - a. Bolt, Hex Head, 3/8-16 x5.5" (2)
 - b. Washer (2)
 - c. Washer, Split lock 3/8 (2)
 - d. Hex nut, 3/8-16 (2)
- F. Hardware Kit #2
 - e. Screw, 1/4-20 x 2.25" Pan Hd. Phil (4)
 - f. Screw, 1/4-28 x .375" Pan Hd. Phil (5)
 - g. Nut, Nylok, 1/4-20 (4)
- G. Installation Instructions



Required Tools

1. Wrench/ Socket size 9/16"
2. Wrench/ Socket size 7/16"
3. Screw driver #2



400A552G01
Hardware Kit #1

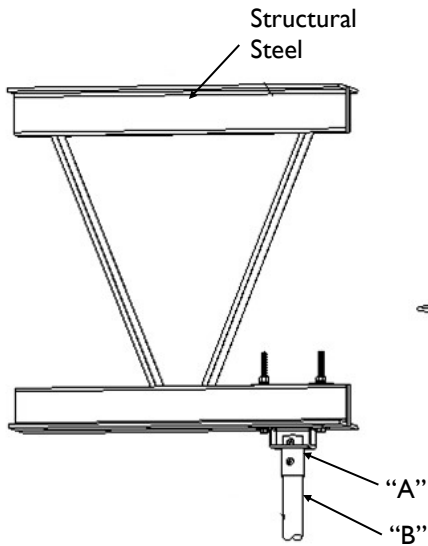
400A557G01
Hardware Kit #2

INSTALLATION INSTRUCTIONS

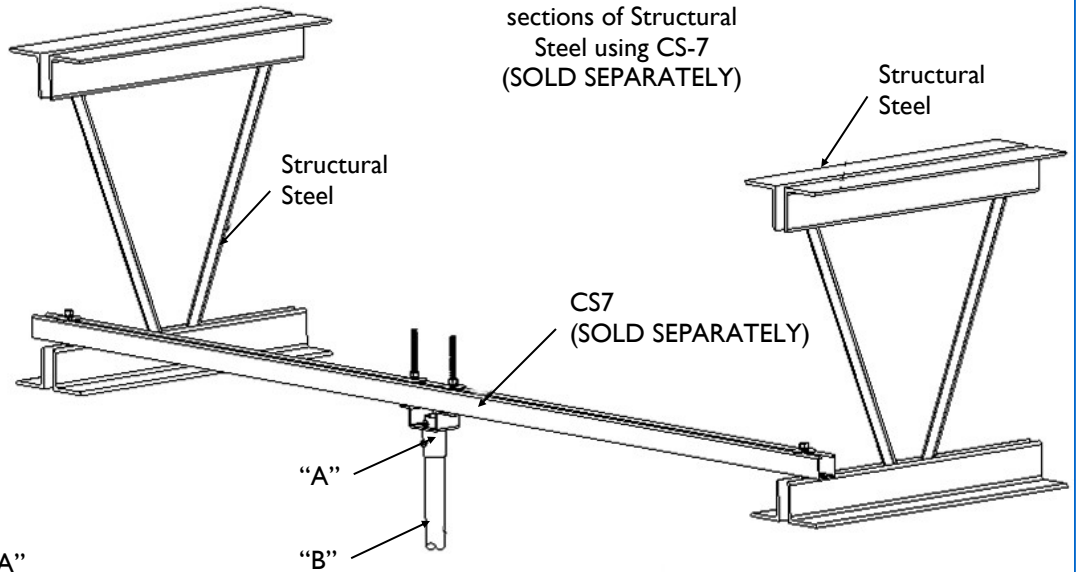
STEP 2 - Route Ethernet cables to desired location.

STEP 3 - Choose Mounting option A or B

Option "A"
Mounted directly to
Structural Steel



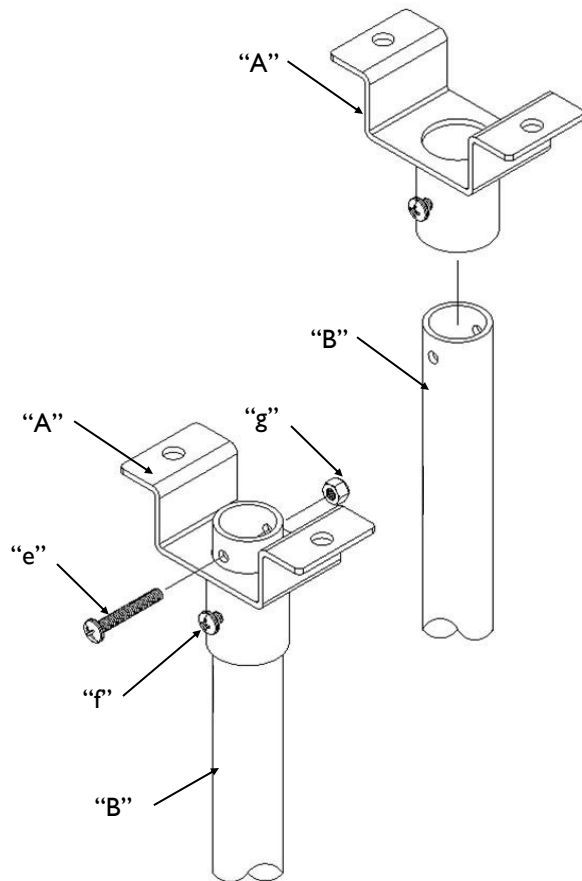
Option "B"
Mounted between two
sections of Structural
Steel using CS-7
(SOLD SEPARATELY)



STEP 4 - Prepare parts for installation

Top Tube Sub-Assembly

- Slide top end of part "B" thru coupling portion of part "A".
- Insert part "e" thru top holes of part "B" secure with "g".
- Secure rotational position by tightening "f" as shown below.



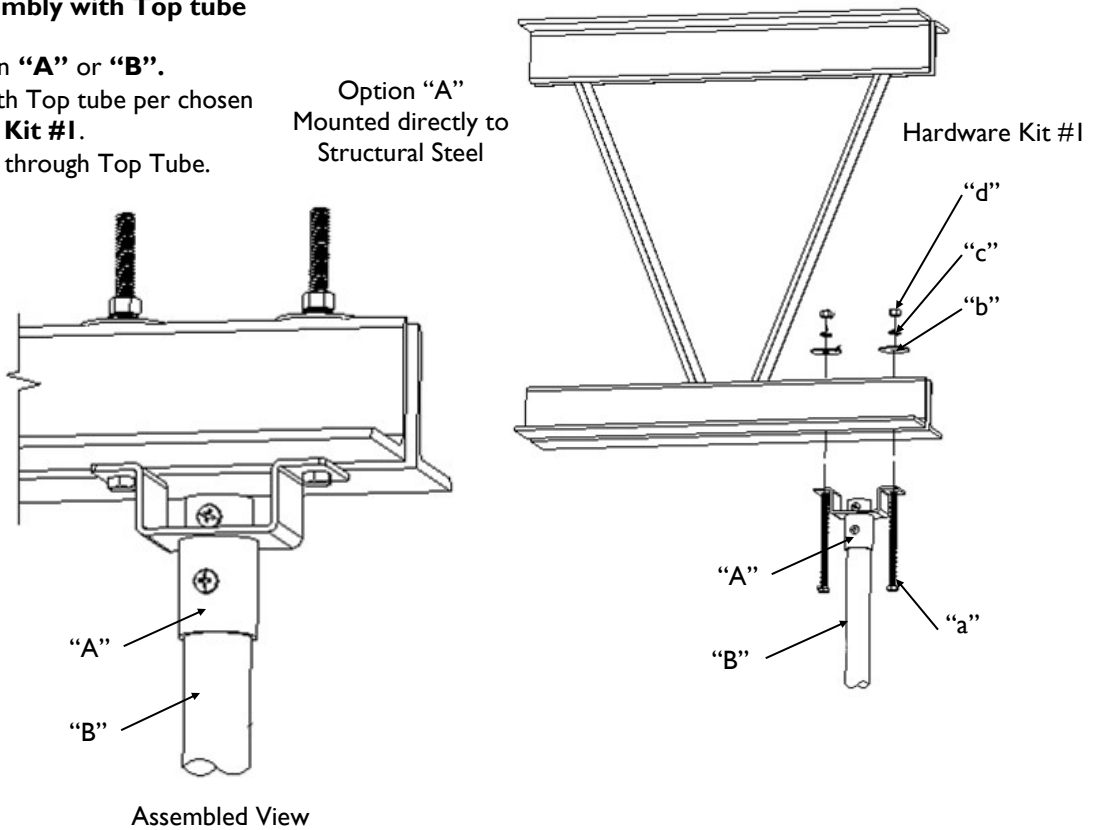
INSTALLATION INSTRUCTIONS

STEP 5 – Install Top Assembly with Top tube

- Choose mounting Option “A” or “B”.
- Mount Top Assembly with Top tube per chosen option using **Hardware Kit #1**.
- Route Tether and cables through Top Tube.

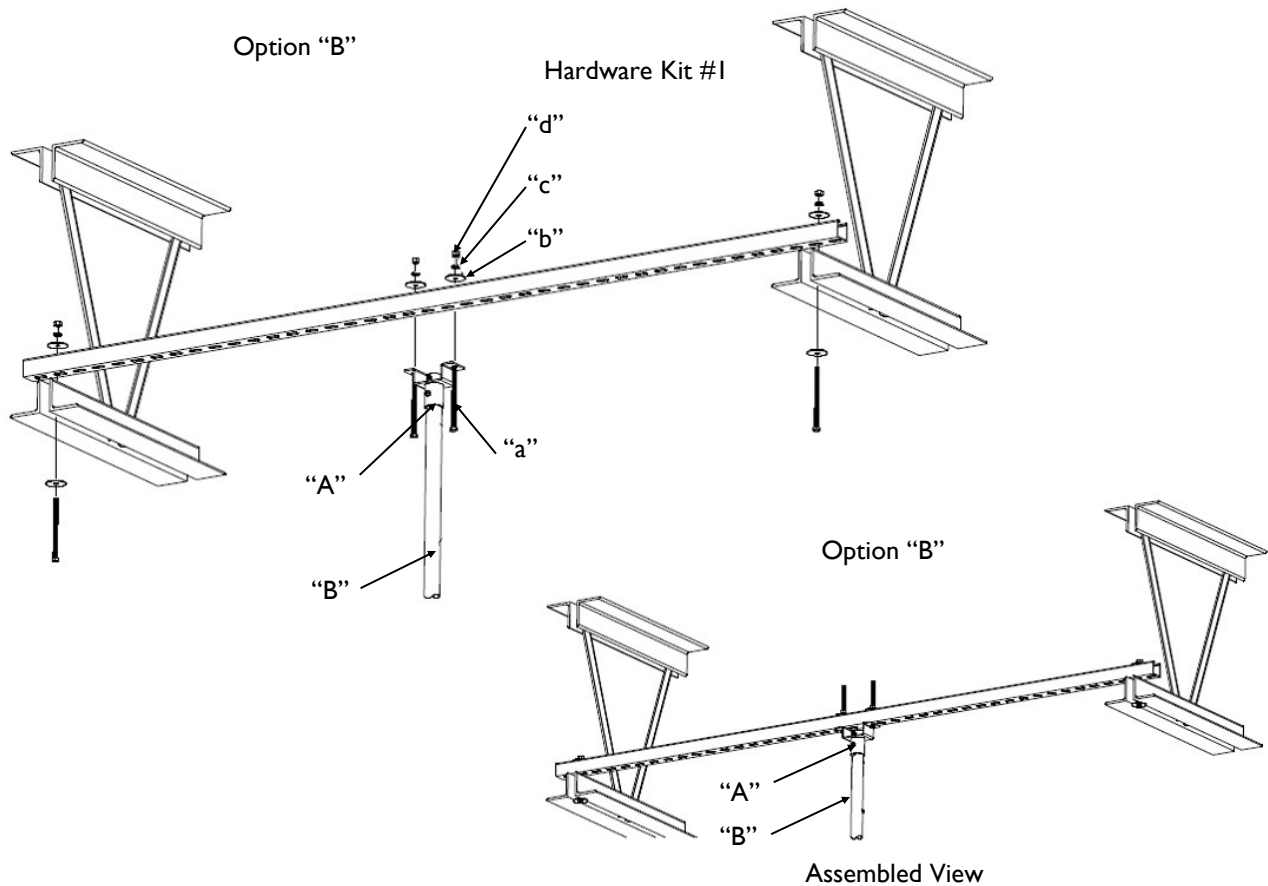
NOTE: A minimum of 10 foot of power cable should extend beyond the bottom end of Top Tube.

Option “A”
Mounted directly to
Structural Steel



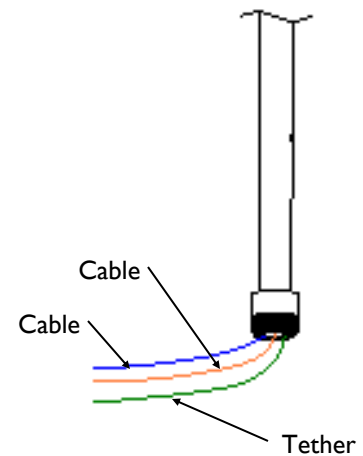
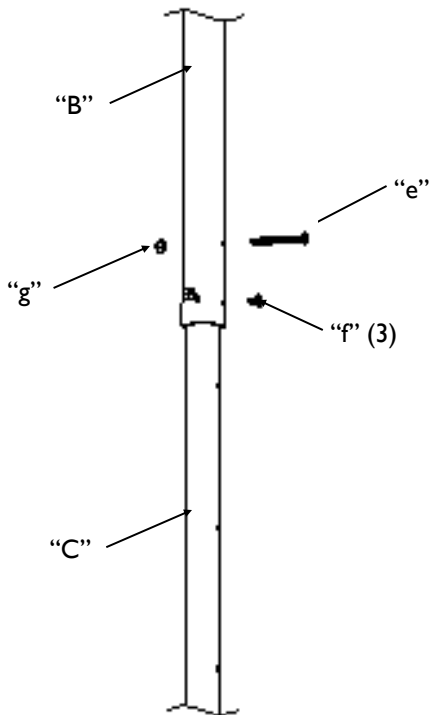
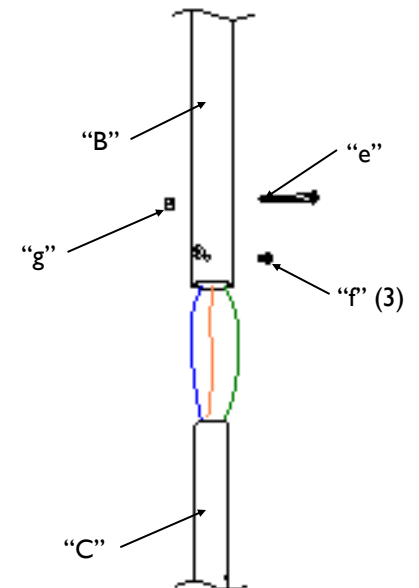
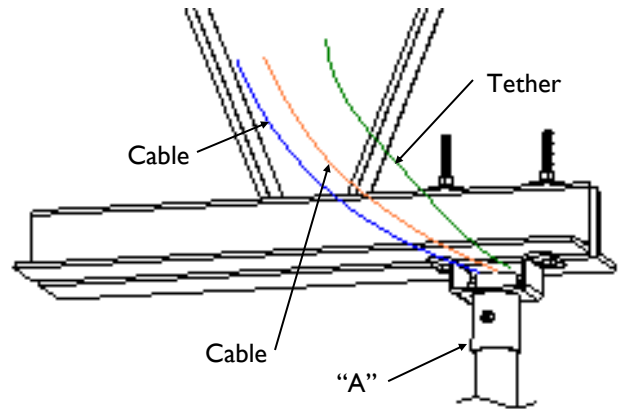
Option “B”

Hardware Kit #1



STEP 6 – Install Bottom Adjustment Tube and set height adjustment

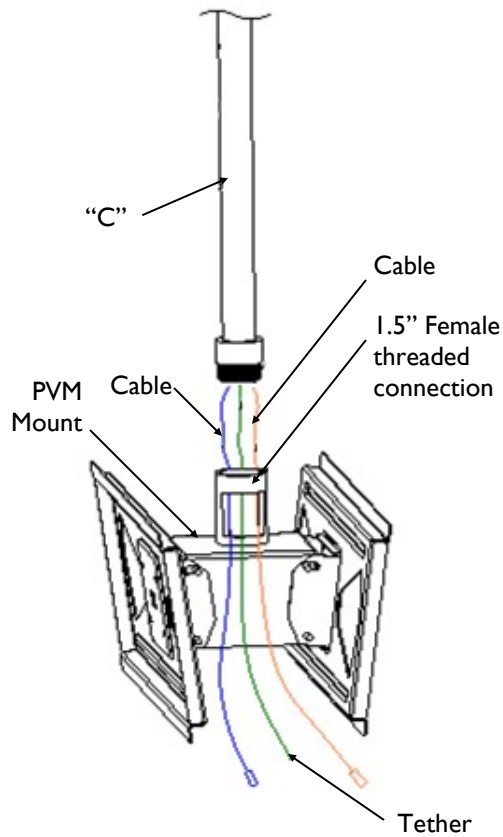
- A. Route extended portion of Tether and cables through “C” (Telescoping Adjustment Tube).
- B. Slide Telescoping Tube into Top Tube “B” until bolt holes align at desired height.
- C. In Hardware Kit #2 find one Screw, 1/4-20 x 2.25” Pan Head part “e”. Use part “e” to lock the desired height. Slide screw through aligned adjustment holes of Telescoping Tube and install locknut part “g”.
- D. Retract extend Tether and cables as needed to have 18 inches of cable extending beyond telescoping tube.
- E. Tighten 3 wedging screws “f” to prevent wobble and position Telescoping tube vertical.
- F. Secure Tether at the top to the structural steel by wrapping around and using cable clip included in Tether package.



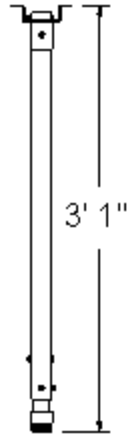
INSTALLATION INSTRUCTIONS

STEP 7 – Install desired Monitor Mount assembly

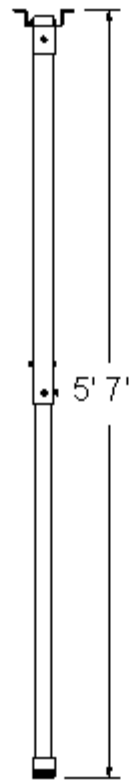
- Route extended Tether and cables through monitor mount as shown.
- Thread mount onto Telescoping Tube “C”.
- Secure Tether to monitor mount by wrapping around mount and installing cable clip provided with Tether.



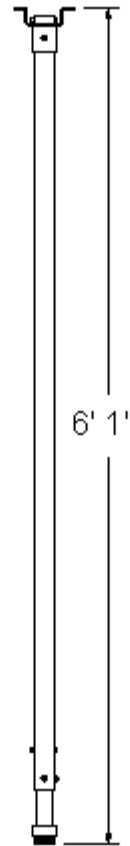
CM-XL-5-W
Shortest config.



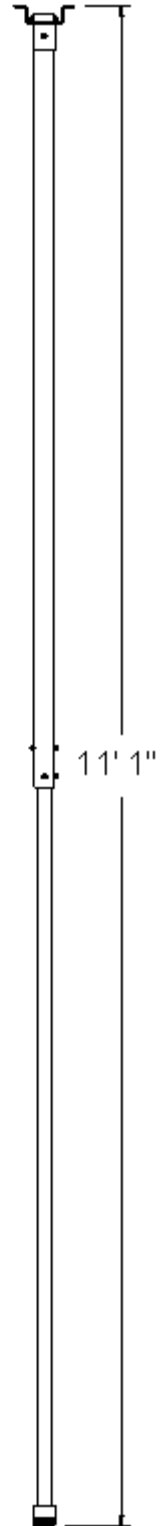
CM-XL-5-W
Longest config.



CM-XL-11-W
Shortest config.



CM-XL-11-W
Longest config.



Unless otherwise noted, all products are covered by Wren's Standard Limited Manufacturer's Warranty as set forth in the current version of Wren's Terms and Conditions.

For a copy of the Terms and Conditions please visit our website at www.wrensolutions.com.