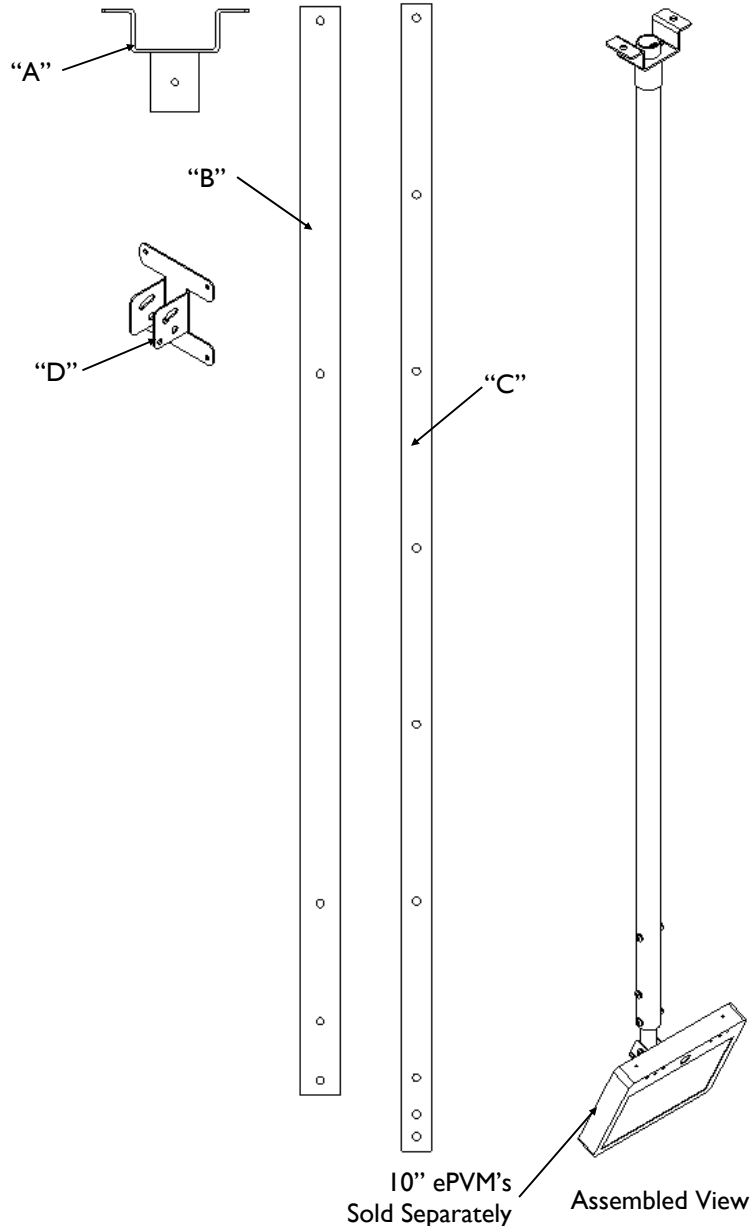


## CM-S10-8-W Ceiling Mount, Single 10" PVM, 5' to 8' adjustment.

### STEP I - Remove Items from boxes and inspect.

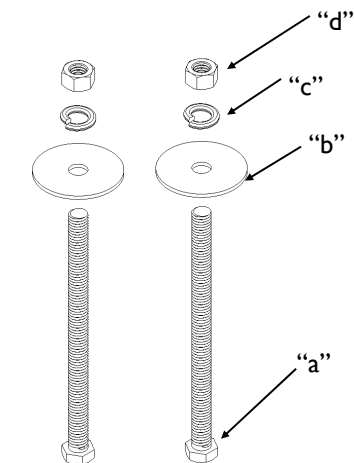
#### Supplied Parts

- A. Top Mount Assembly
- B. Top Tube 1.375" diameter
- C. Bottom Telescoping 1" diameter
- D. Monitor Mounting Bracket
- E. Tether (not shown)
- F. Hardware Kit #1
  - a. Bolt, Hex Head, 3/8-16 x5.5" (2)
  - b. Washer (2)
  - c. Washer, Split lock 3/8 (2)
  - d. Hex nut, 3/8-16 (2)
- G. Hardware Kit #2
  - e. Screw, 1/4-20 x 1.75" Pan Hd. Phil (2)
  - f. Nut, Nylok, 1/4-20 (2)
- H. Hardware Kit #3
  - g. Screw, 1/4-20 x 1.5" Pan Hd. Phil (2)
  - h. Nut, Nylok, 1/4-20 (2)
  - i. Packages of 4 screws M4-0.7 x6mm (2)
- I. Hardware Kit #4
  - j. Screw, 1/4-28 x .375" Pan Hd. Phil (2)
  - k. Screw, 1/4-20 x 1.75" Pan Hd. Phil (1)
  - l. Nut, Nylok, 1/4-20 (1)
- J. Installation Instructions

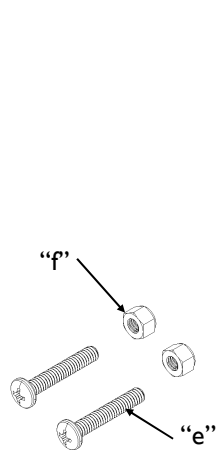


#### Required Tools

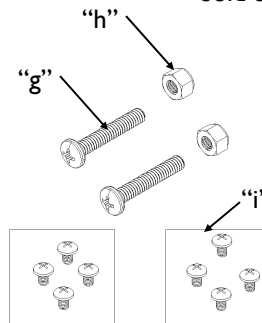
1. Wrench/ Socket size 9/16"
2. Wrench/ Socket size 7/16"
3. Screw driver #2



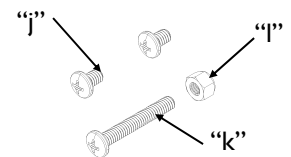
**400A552G01**  
**Hardware Kit #1**



**400A553G01**  
**Hardware Kit #2**



**400A554G01**  
**Hardware Kit #3**

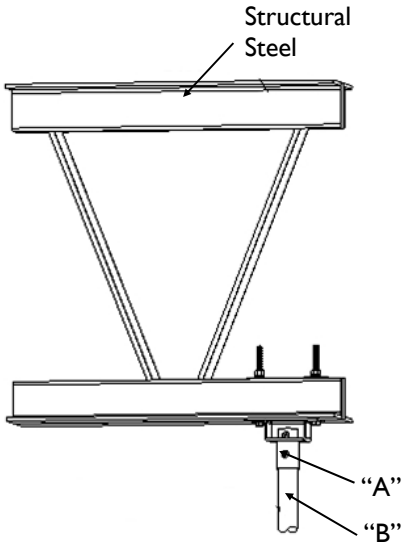


**400A557G01**  
**Hardware Kit #4**

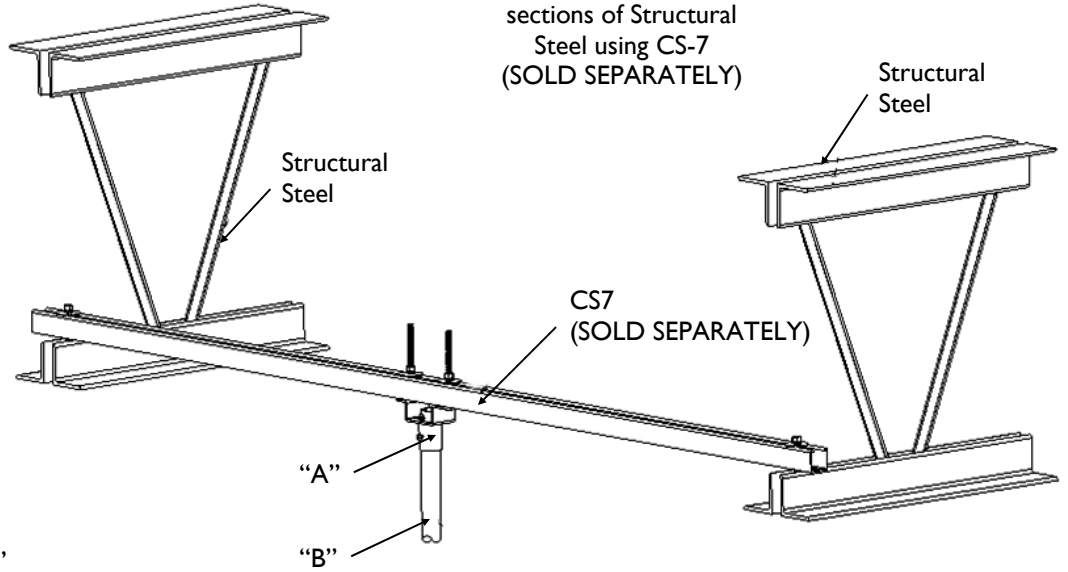
**STEP 2 - Route cables to desired location.**

**STEP 3 - Choose Mounting option A or B**

Option "A"  
Mounted directly to  
Structural Steel



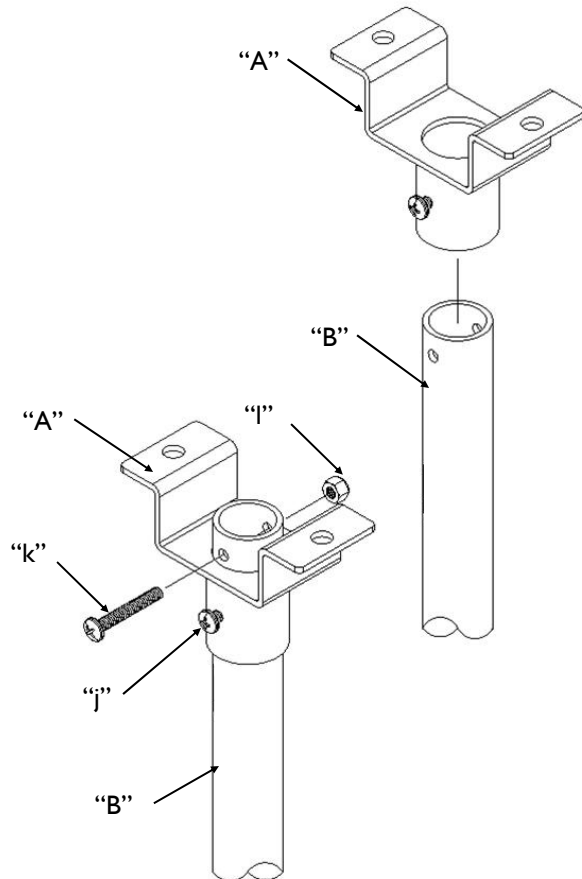
Option "B"  
Mounted between two  
sections of Structural  
Steel using CS-7  
(SOLD SEPARATELY)



**STEP 4 - Prepare parts for installation**

**Top Tube Sub-Assembly**

- Slide top end of part "B" thru coupling portion of part "A".
- Insert part "e" thru top holes of part "B" secure with "g".
- Secure rotational position by tightening "f" as shown below.



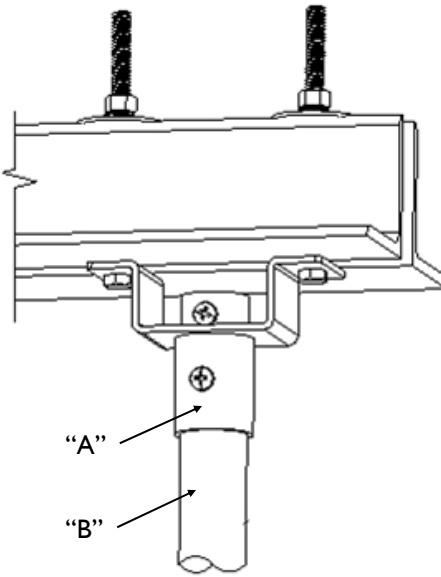
# INSTALLATION INSTRUCTIONS

## STEP 5 – Install Top Assembly with Top tube

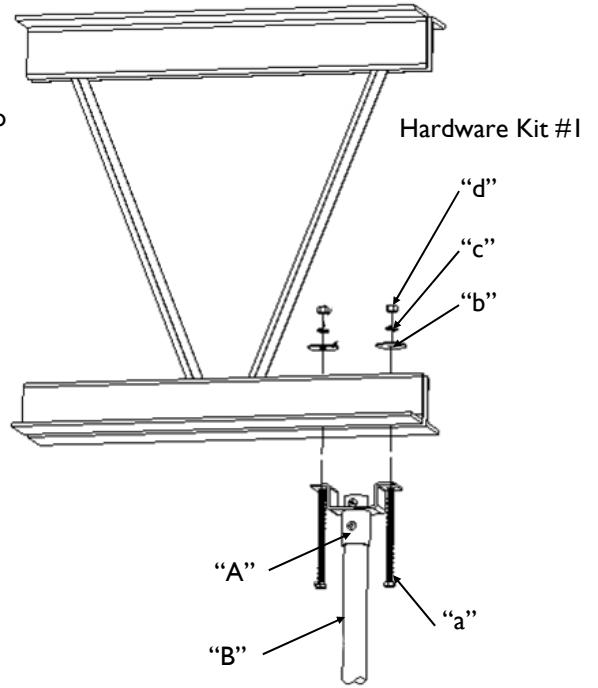
- Choose mounting Option “A” or “B”.
- Mount Top Assembly with Top tube per chosen option using **Hardware Kit #1**.
- Route Tether and cables through Cable Entry in Top Tube.

**NOTE:** A minimum of 10 foot of power cable should extend beyond the bottom end of Top Tube.

Option “A”  
Mounted directly to  
Structural Steel

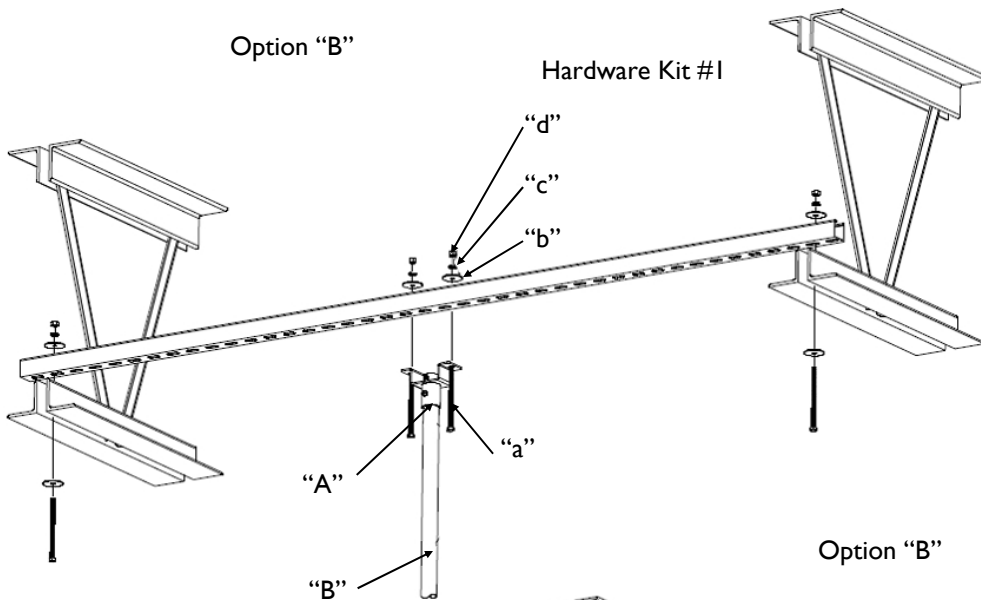


Assembled View

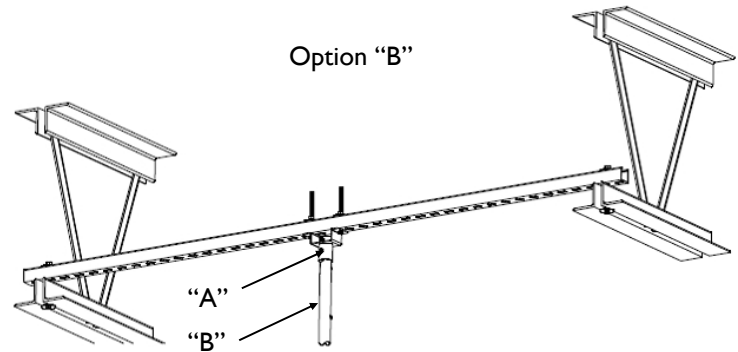


Option “B”

Hardware Kit #1



Option “B”

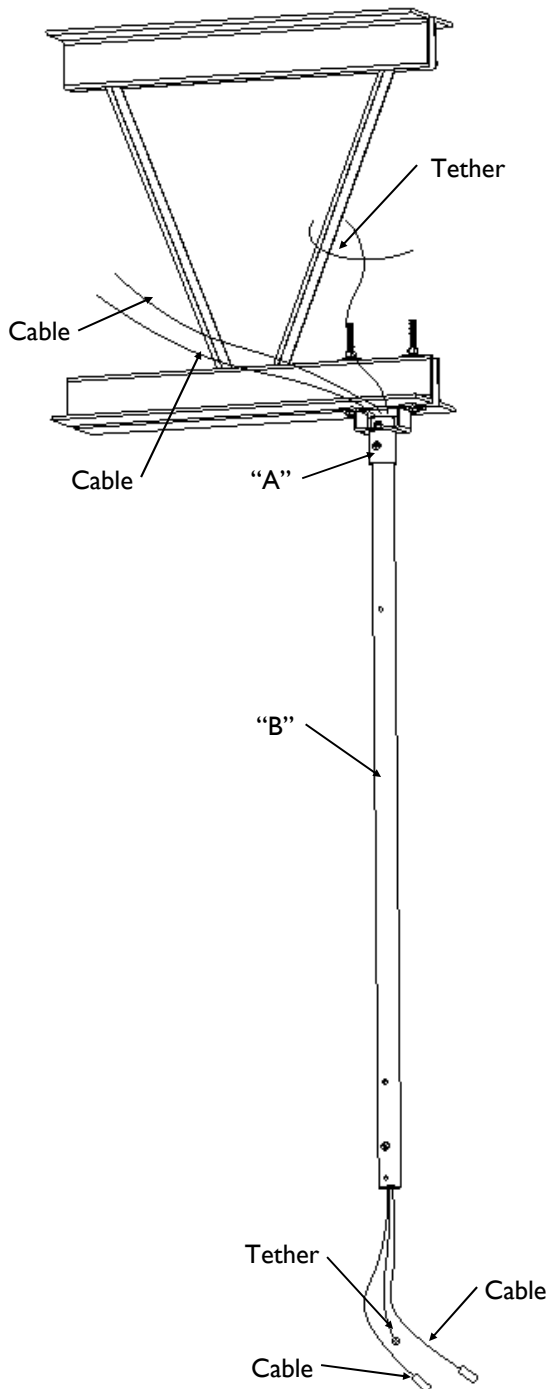


Assembled View

## STEP 6– Process for installing Telescoping tube

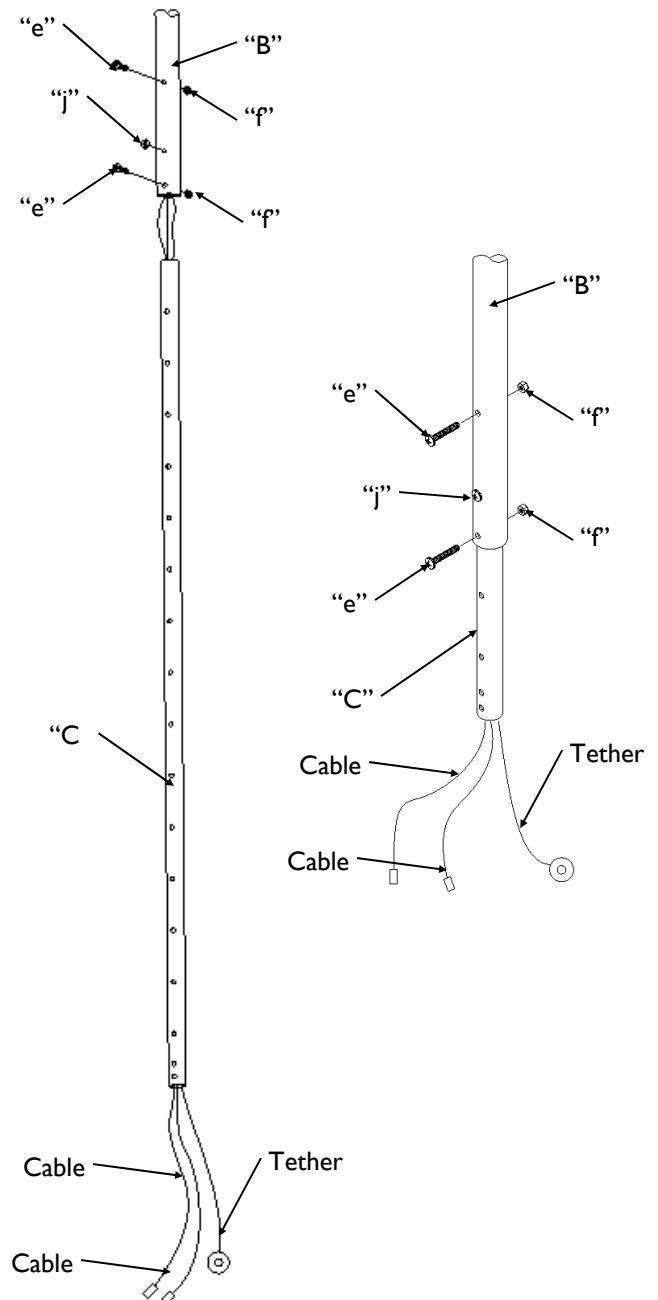
### A. Route Cables and Tether through tubing

- Route Cables and Tether through the Top Tube assembly as shown.
- Secure Tether to structural steel. Using cable clip found in Tether package. Leave no more than 12" slack in tether.



### B. Install Telescoping tube and complete desired height adjustment.

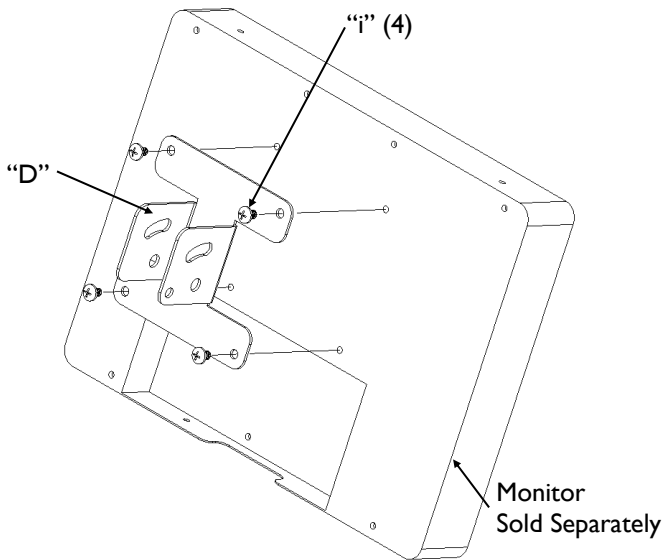
- Route extended portion of Cables and Tether through Telescoping Tube.
- **Note: See the two holes used to mount part “C” in Telescoping tube. These holes must be exposed.**
- Slide Tube “C” into Tube “B” until bolt holes align at desired height.
- Using screws from Hardware Kit #2, lock the desired height. Slide screw through aligned adjustment holes of tubing and thread Lock nut in place.
- Tighten Wedging Screw to prevent wobble.
- Retract extend Tether and cables as needed to have 18 inches of cable extending beyond tube “C”.



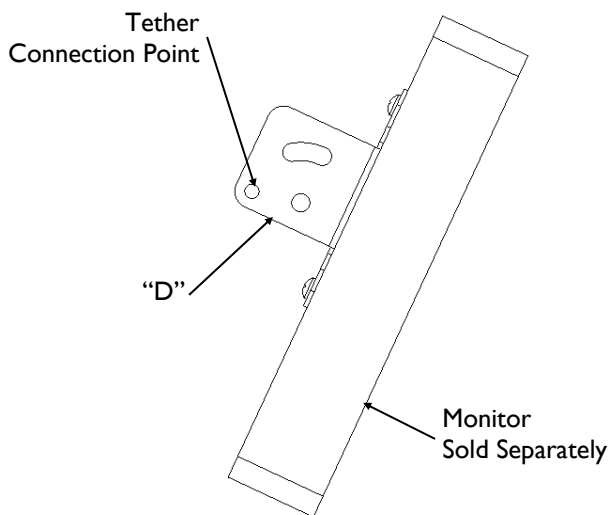
## STEP 7 — Install 10" ePVM on Monitor Mounting Bracket

### A. Prepare Monitors for installation.

- Remove monitor access door. Set aside to be installed later.
- Hardware Kit #3 has 2 packages of "i" monitor mounting screws. Use one package to mount monitor to item "D".



### MOUNTING MONITOR



### SIDE VIEW IDENTIFICATION

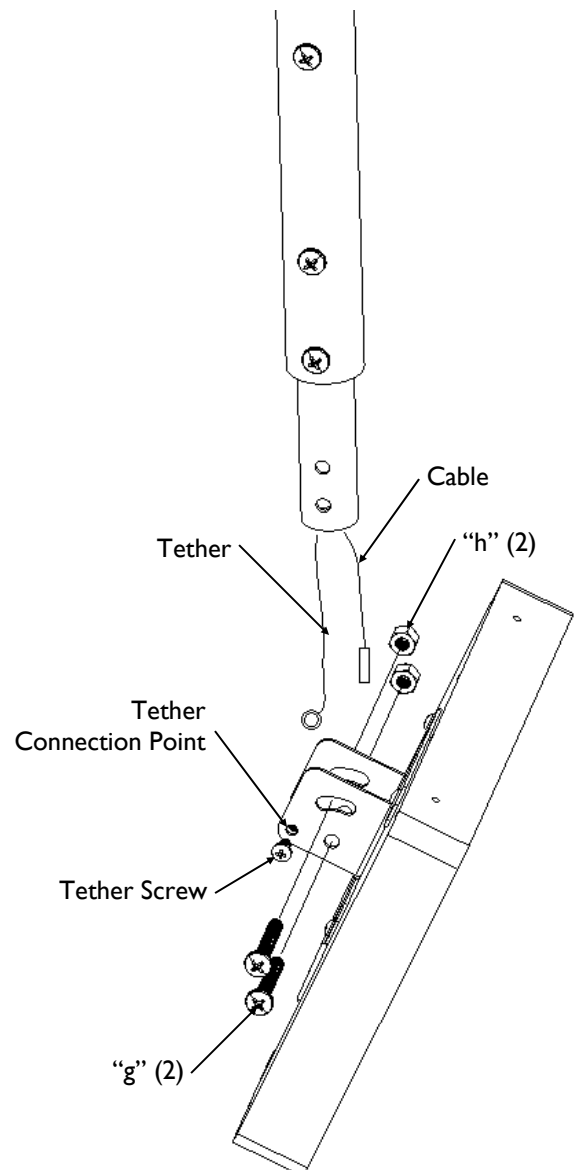
## STEP 8 — Mount Monitor Mounting Bracket to Telescoping Ceiling Mount

### A. Attach Tether to Monitor Mounting Bracket

- Use screw and nut found in Tether Package to attach Tether end with eye to Monitor Mounting Bracket at Tether attachment point identified below.

### B. Align Monitor Mounting Bracket holes with holes in Telescoping tube.

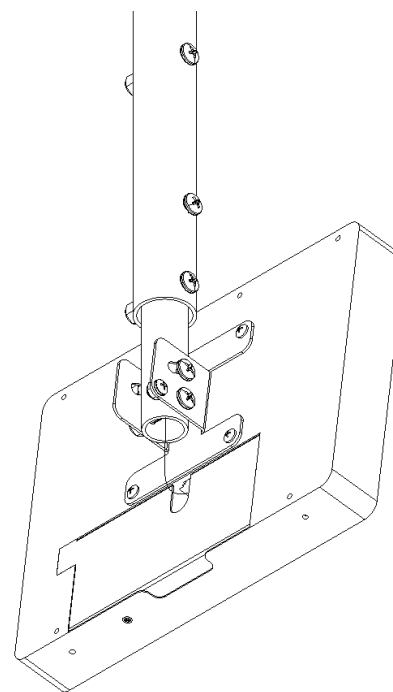
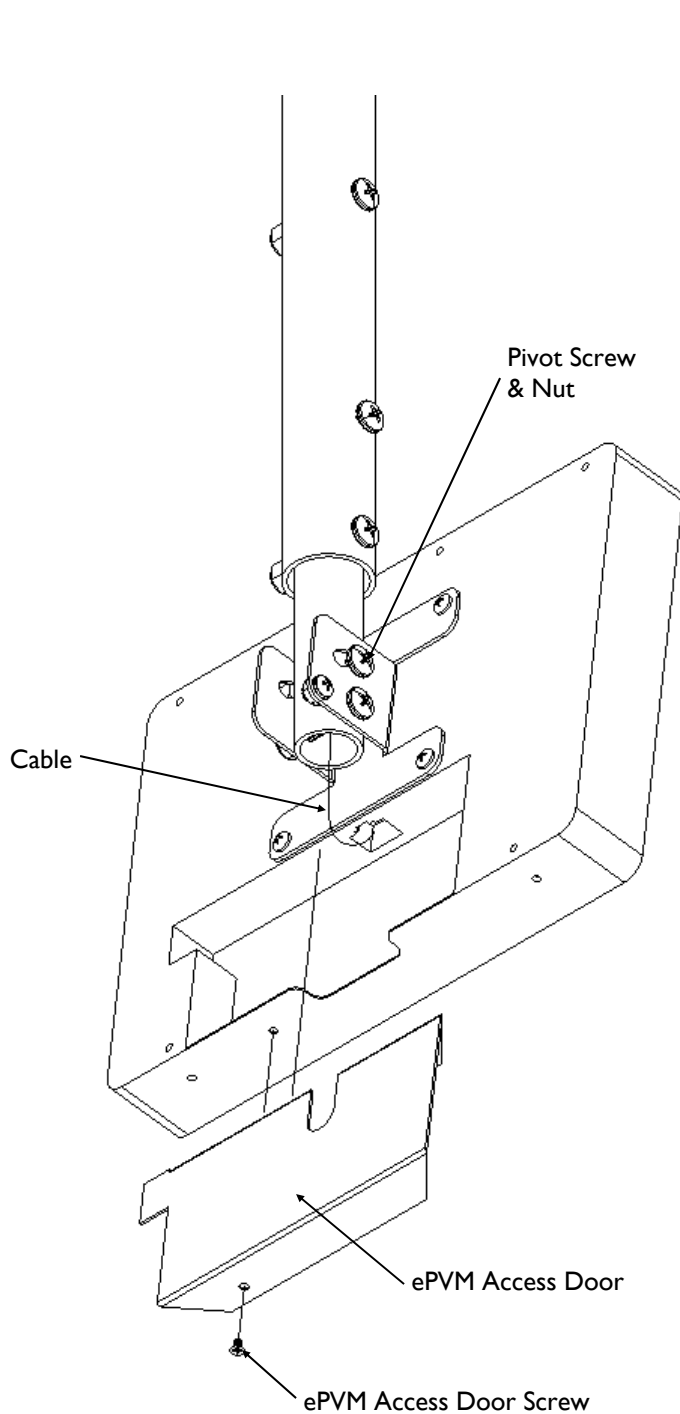
### C. Use the remaining 2 Screws and Lock nuts from Hardware Kit #3 to secure Monitor Mounting Bracket on Telescoping tube.



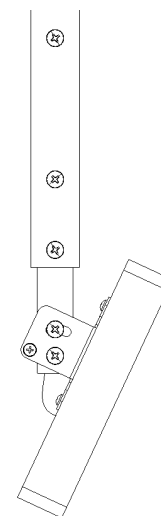
## STEP 9 — Complete Cable connection to ePVM

### A. Connect Cable to ePVM.

- Loosen screw allowing monitor mounting bracket to pivot.
- Connect cable to the monitor.
- Install access door removed in STEP 7 to the monitor.
- Retract excess cable.
- Position Monitor to desired camera viewing angle.
- Snuggly tighten Pivot Screw “g” and nut “h” to secure Monitor position.



**BOTTOM VIEW WITH ACCESS DOORS INSTALLED**



**SIDE VIEW**